

## Chlorine CL<sub>2</sub> Detector (Analogue & Modbus)

### Product Overview

The AX-GSE3-CL2 is a high-performance Chlorine Gas Detector designed to provide accurate and reliable monitoring of Chlorine Gas concentrations. Each unit is supplied pre-calibrated and ready for immediate installation. The device offers jumper-selectable 0–10V and 4–20mA analogue outputs along with Modbus Output for flexible integration with various control systems.

The Electrochemical sensor provides a cost-effective solution for detecting Chlorine Gas. It is factory-calibrated for 0-10 PPM detection available for both Wall and Duct Mount applications.



### Products Features

- ABS Plastic Enclosure, IP65
- 24V DC Powered Model (24V AC Optional)
- 0-10 PPM Detection Ranges
- Display & Non Display Versions
- Available with Analogue & Modbus Outputs
- Available in Wall and Duct Mount Versions

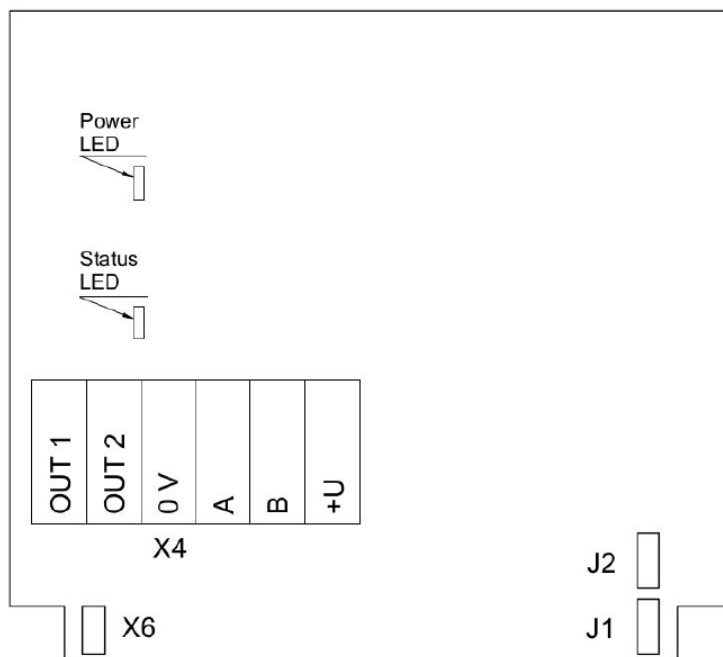
### Product Specifications

Power Supply:	12-36V DC / (24V AC Optional)
Sensor Type:	Electrochemical
Sampling Method:	Diffusion
Detection Range:	0-10 PPM
Resolution:	0.1 PPM
Maximum Overload:	100 PPM
Signal Update:	Every 1 Second
Warm-up Time:	≤ 1 Min
Response Time (T90):	<60 Seconds
Sensor Lifetime:	> 1 Year (In an Appropriate Residential or Light Commercial Applications)
Maintenance Interval:	6 Months
Typical Coverage Area:	75 SQM (5Meter Radius)
Output:	4-20mA / 0-10V (User Selectable)
Digital Interface:	RS485 Modbus RTU (See User Manual For Modbus Configuration)
Power Consumption:	< 2 VA
Output Scale Width:	Recommended: 20-100% of the range > 10 × resolution in any case
Enclosure Type & Rating:	ABS Plastic (Grey Colour), IP65
Dimensions:	H 82×W 80×D 55 mm (Enclosure), Length 230mm, Dia Ø35 (Duct Probe)
Glands:	M16 for Cable Entry, M25 for Sensor Opening
Operating Temp:	-20 to 50°C
Operating Humidity:	15-90 %RH (Non-Condensing)
Environmental Requirements:	Air Pressure: 900 -1100 mBar
	Safety: Industrial indoor and outdoor locations
	Exposure Safety: Explosion-safe areas. Non-aggressive atmosphere
EMC Compliance:	CE
COO:	UK

### Product Order Codes

AX-GSE3-CL2	Chlorine Gas Detector, Wall Mount, Analogue + Modbus Outputs
AX-GSE3-CL2-D	Chlorine Gas Detector, Duct Mount, Analogue + Modbus Outputs
<b>** Add “-24” for 24VAC power supply at the end of part number (i.e. AX-GSE3-CL2-24)</b>	

### Connection Diagrams:



PCB without PSU and relays

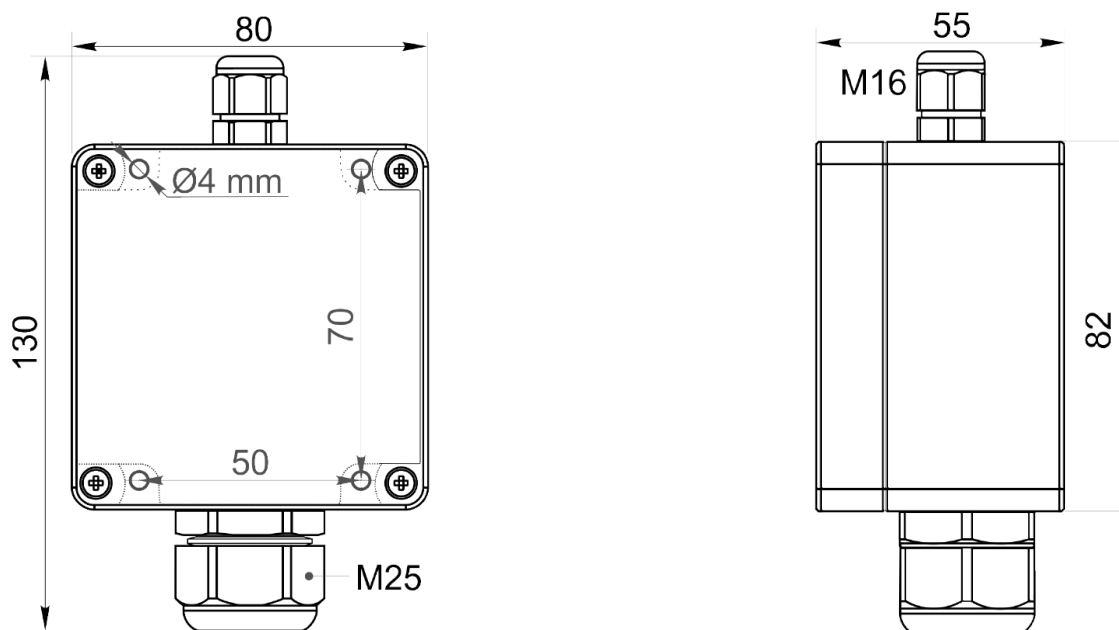
Jumpers	
J1	OUT1 type (open: 4-20 mA; closed 0-10 V)
J2	OUT2 type (open: 4-20 mA; closed 0-10 V)
X6	Reset Modbus network parameters to default
X4 Terminals	
OUT1	OUT1 4-20 mA / 0-10 V output
OUT2	OUT2 4-20 mA / 0-10 V output
0V	0 V / 24 VAC Neutral (optional)
A	RS485 A / Data +
B	RS485 B / Data -
+U	+24 VDC / 24 VAC Phase (optional)

# AX-GSE3-CL2

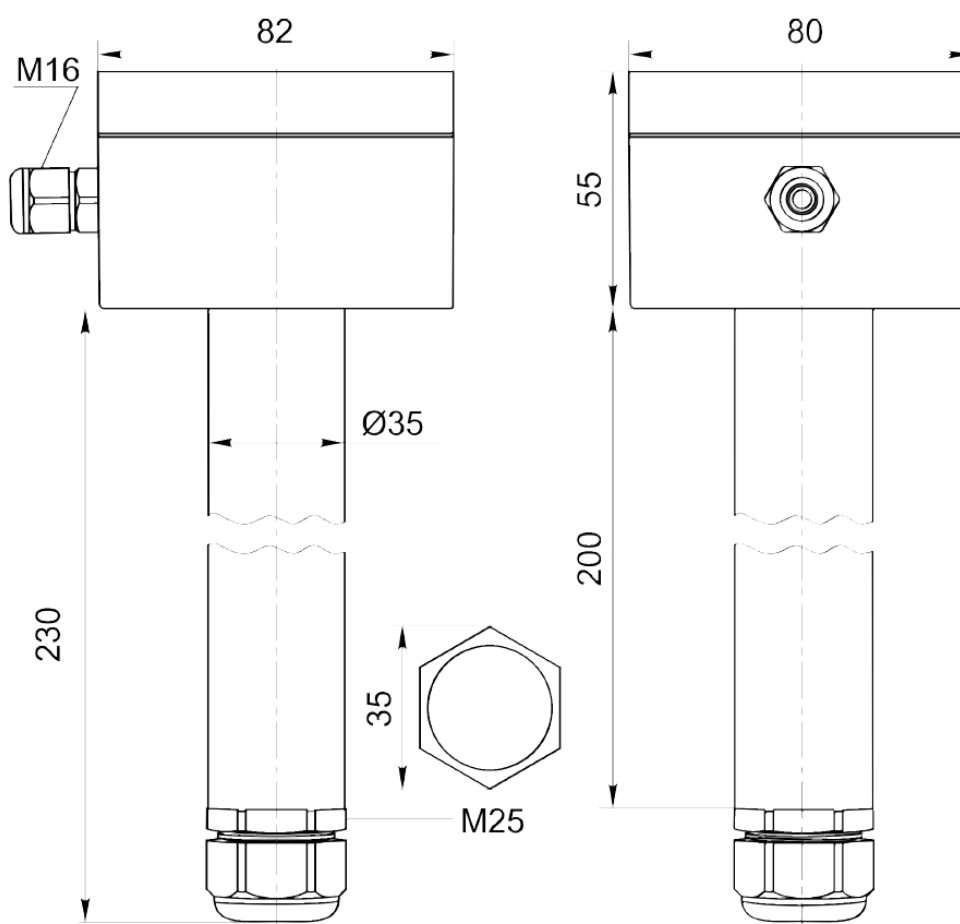


## Chlorine CL<sub>2</sub> Detector (Analogue & Modbus)

### Dimensions:



### Duct Version Dimension:



### Datasheet Content:

Every effort has been taken in the production of this data sheet to ensure accuracy. Annicom do not accept responsibility for any damage, expense, injury, loss or consequential loss resulting from any errors or omissions. Annicom has a policy of continuous improvement and reserves the right to change this specification without notice.