

AX-DSP-8

Stainless Steel Display Panel with upto 8 LCD



The Display unit is designed for fitting into an aperture in the wall, and will display Temperature, Humidity or Differential pressure or other Parameters- mounted on a brushed stainless steel plate.

The unit accepts upto 8 x 0-10V from the BMS or Sensors and is operated from 24Vac. The whole front plate screws to the back box for ease of installation. The unit comes complete with a sounder , alarm LED and mute button

Product Specifications

Front Plate:	Brushed Stainless Steel
Back Box:	Aluminium
Dimensions:	Plate 159(W) x 285(H) x 1.6(D) mm
	Backbox 127(W) x 253(H) x 36(D) mm
Terminals:	Terminal block 6A suitable for cable 0.5 to 2.5mm ²
Ambient Range:	0 to 50°C

LCD Displays

Temperature Range:	0 to 50 degC
RH Range:	0 to 99% RH
Pressure Range:	-50 to +50 Pa or 0-100 Pa
LCD Size:	3 x digit 10mm height
Display Resolution:	0.2°C or 0.5% RH or 1 Pa
Alarm LED Indicator :	Red

Inputs

Power Supply:	24Vac
Power Consumption:	600mA max
Input :	Temperature 0-10Vdc
	RH 0-10Vdc
	Pressure 0-10Vdc
	Gas 0-10Vdc
	Alarm VFC

Country of Origin: United Kingdom

Order Code:

AX-DSP-8	8 LCD Display on a stainless steel plate as per above 8 x 0-10V input
AX-DSP-7	7 LCD Display on a stainless steel plate as per above 7 x 0-10V input
AX-DSP-6	6 LCD Display on a stainless steel plate as per above 6 x 0-10V input
AX-DSP-5	5 LCD Display on a stainless steel plate as per above 5 x 0-10V input
AX-DSP-BB8	Backbox made in Aluminium

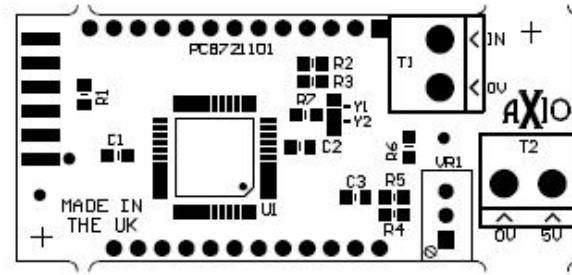
AX-DSP-8

Stainless Steel Display Panel with upto 8 LCD

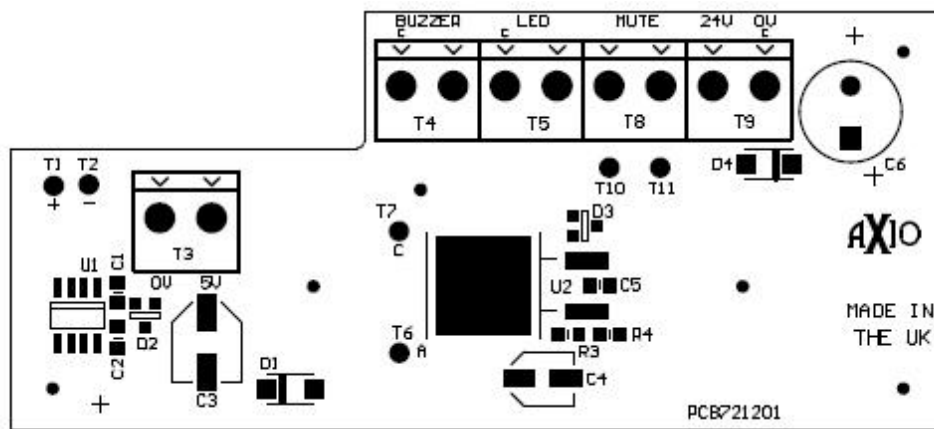


Connections

Display PCB
1 per Display



Main PCB



Mounting Backbox

